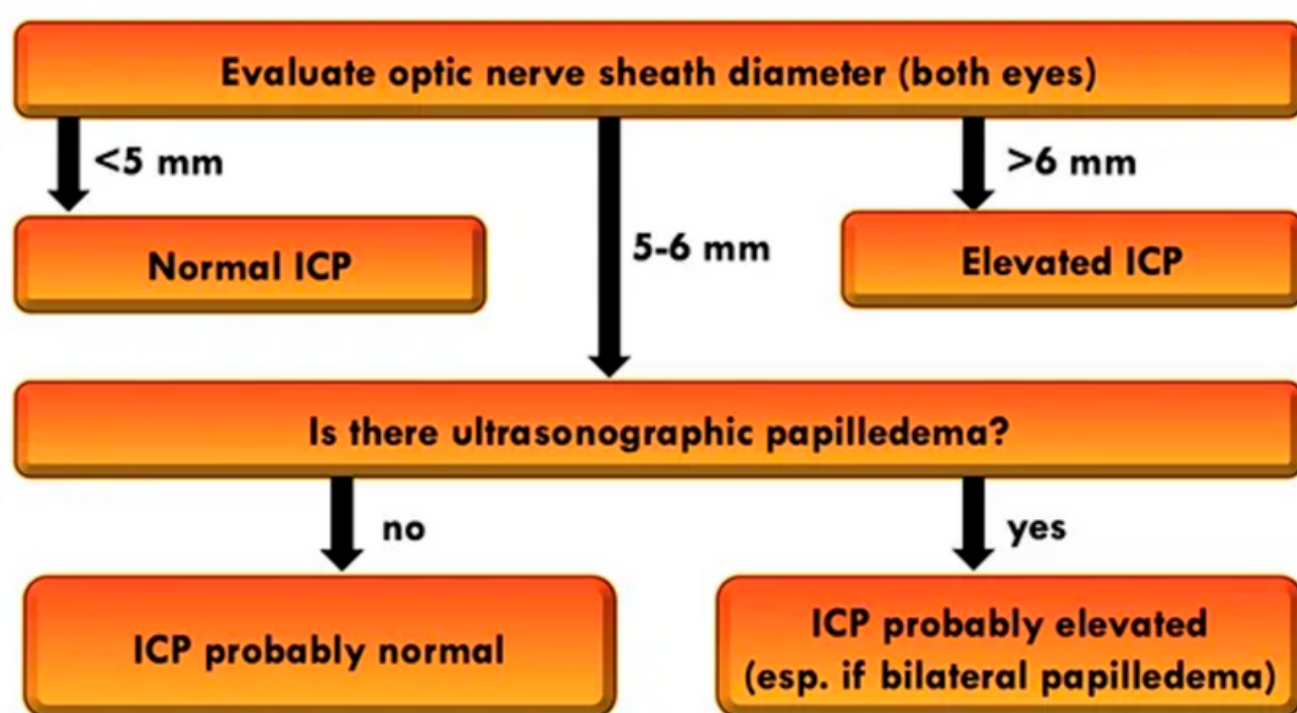
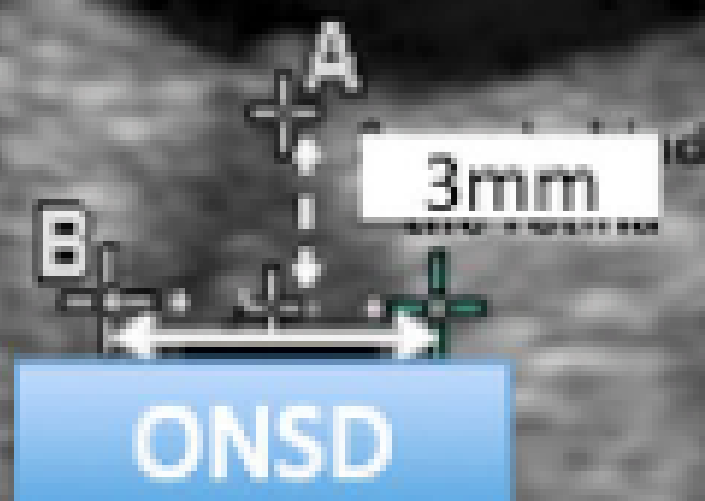
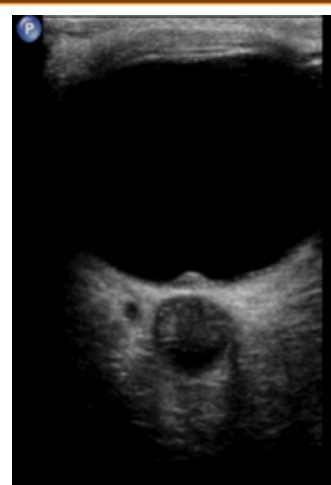


OCULAR ULTRASOUND

OPTIC SHEATH: 3 DOWN, 5 ACROSS



- Linear probe (7-15 MHz)
- Transverse plane (axial image)
- Posterior chamber should be hypoechoic (set gain)



FOVEA PROTOCOL

FOVEA: ocular ultrasound protocol	
Front of the eye	Foreign bodies, lens dislocations or subluxations, afferent pupillary defects, anterior chamber size changes
Optic nerve	Increased intracranial pressure in traumatic brain injury and idiopathic intracranial hypertension
Vitreous	Retinal hemorrhage, retinal detachment, vitreous hemorrhage, vitreous detachment, lens dislocation, endophthalmitis
Extraocular	Retrobulbar hemorrhage, globe disruption, foreign bodies
Artery/vascular	Central retinal artery occlusion, central retinal vein occlusion

REFERENCES

- Kilker BA. Eur J Emerg Med 2014.
- Robba C. Intensive Care Med 2019.
- Corradi F. Crit Ultrasound J 2018.
- Geeraerts T. Intensive Care Med 2007.
- Geeraerts T. Intensive Care Med 2008.
- Robba C. Intensive Care Med 2018.